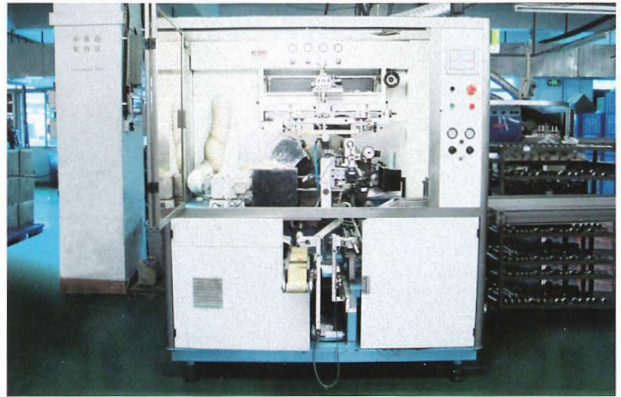
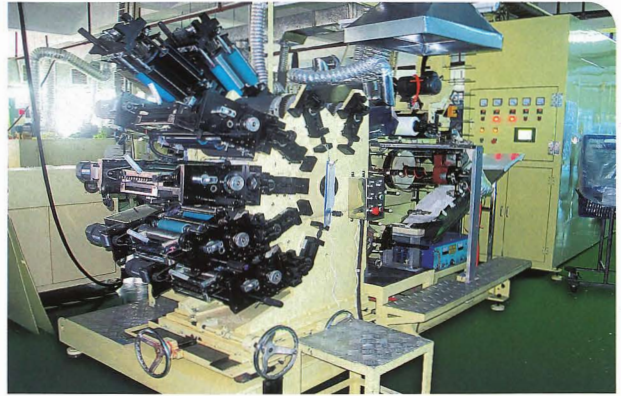


# HTT PACKAGING & DESIGN

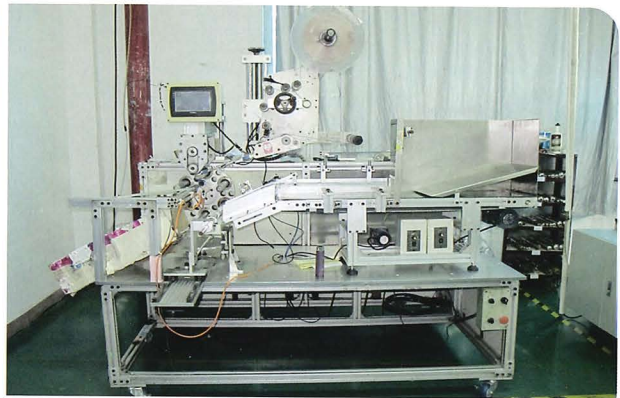
## BR SERIES



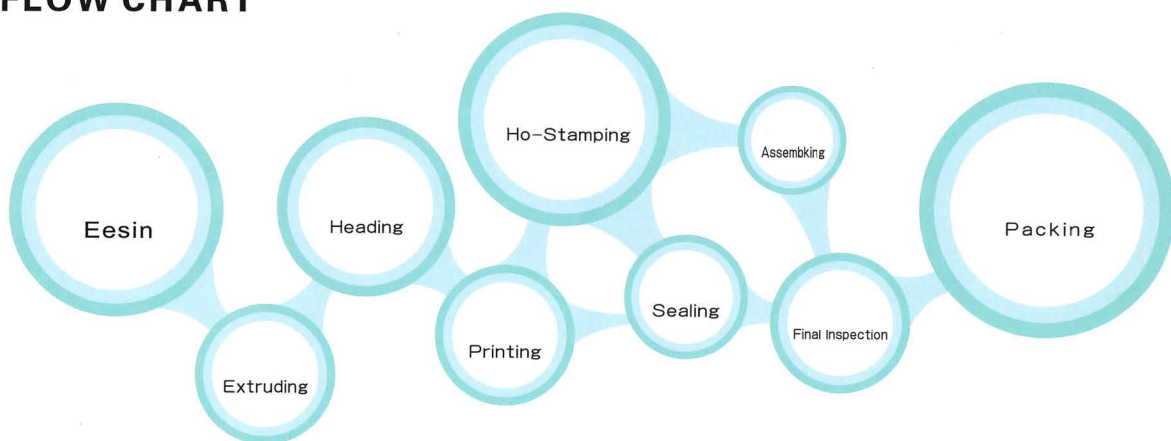
**EQUIPMENT**







## PRODUCTION PROCESS FLOW CHART



- We provide a diverse range of high quality products that are with superior material selection, fine workmanship and punctual delivery.
- As for daily chemical industry, we provide a new impetus for the customers' business development with optimal cheaper prices.
- As for professional line, we attach higher value to products for customers by creating 100% handmade competitive products.



TUBES WITH SILICA GEL APPLICATORS



● D22 ▶

tube with silica gel applicator

● D19 ▶

tube with silica gel applicator





## ALUMINUM-PLASTIC COMBINED CAPS



● D30 ▶ with aluminum-plastic combined cap



● D35 ▶ tube with aluminum-plastic combined cap

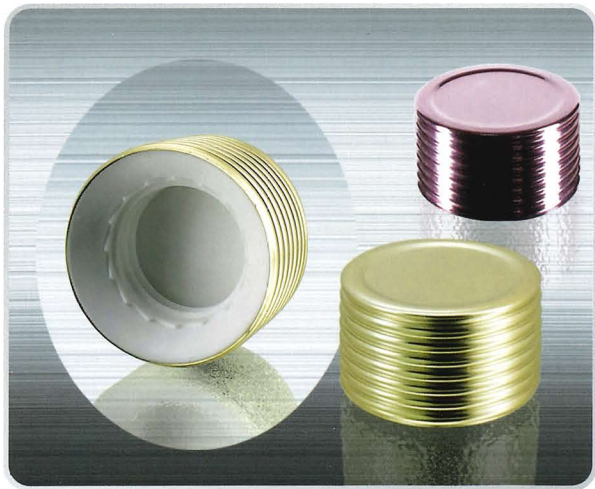


● D40 ▶ with aluminum-plastic combined ca  
● D45 ▶ tube with aluminum-plastic combined cap

● D50 ▶ tube with aluminum-plastic combined cap



## ALUMINUM-PLASTIC CAPS



● D30 ▸ with aluminum-plastic cap



● D35 ▸ with aluminum-plastic cap



● D40 ▸ with aluminum-plastic cap



● D45 ▸ with aluminum-plastic cap



● D50 ▸ with aluminum-plastic cap



TUBES WITH MASSAGE LIDS SERIES



● D19 ► | ● D16 ► | massage lid with zinc alloy, ceramic or plastic material applicator



● D19 ► | with pagoda-shaped cap



● D19 ► roller ball



● D19 ► three roller balls tip



## TUBES WITH POINTED APPLICATORS SERIES





TUBES WITH POINTED APPLICATORS SERIES



■

with double-layer cylinder cap



■ D16 ▶

with double-layer cylinder cap



■ D19 ▶

with double-layer cylinder cap



■ D16 ▶

with long trumpet-shaped cap

## TUBES WITH POINTED APPLICATORS SERIES



● D19-001 ▶ 配细尖喇叭盖 with long trumpet-shaped cap



● D16 ▶  
with double layer cap matched for pointed applicator



● D19 ▶  
with D16 double layer cap matched for pointed applicator



● D16 ▶  
with cylinder cap matched for pointed applicator



● D19 ▶  
with cylinder cap matched for pointed applicator



## TUBE WITH DISPOSABLE TOP



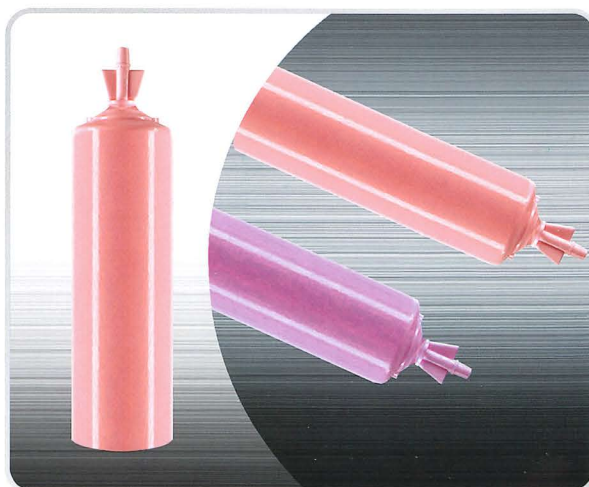
● D13 ► with disposable top



● D16 ► with disposable top



● D19 ► tube with disposable top



● D22/25 ► tube with disposable top

## TUBE WITH PUMP SERIES



● D25 ▶ tube with pump 01



● D25 ▶ tube with pump 02



● D30 ▶ tube with pump 01



● D30 ▶ /tube with pump 02



● D38 ▶ tube with pump 01



TUBE WITH LONG APPLICATOR SERIES



D50

tube with long applicator



D45

tube with long applicator



D40



D45



## OVAL TUBES SERIES



### SQUARE OVAL TUBES



● D30 ▶  
square tube with square oval cap 30-30



● D30 ▶  
square tube with oval Doctorial hat shaped cap



● D30 ▶  
square tube with square oval cap 30-35A



● D30 ▶  
square tube with square oval cap 30-36A



● OVAL TUBE WITH SCREW ON CAP



● D25 ▶ oval tube with screw on cap



● D30 ▶ oval tube with flat screw on cap



● D30 ▶ oval tube with double-layer screw on cap



● D35 ▶ oval tube with flat screw on cap



● D35 ▶ oval tube with round screw on cap



● D40/D45 ▶ oval tube with screw on cap

### ● OVAL TUBE WITH SCREW ON CAP



● D35 ▶ /oval tube with thread screw on cap



● D40 ▶ /oval tube with thread screw on cap



● D40 ▶ oval tube with cylinder cap



● D35 ▶ oval tube with square screw on cap



● D40 ▶ /oval tube with square screw on cap



● D50 ▶ /oval tube with square screw on cap



● OVAL TUBE WITH TRIANGULAR SCREW ON CAP



● D30 ▶

oval tube with triangular screw on cap



● D40 ▶

oval tube with triangular screw on cap

● OVAL TUBE WITH FLIP TOP CAP



● D30 ▶

oval tube with flip top cap



● D35 ▶

oval tube with flip top cap



● D40/D45 ▶

oval tube with flip top cap



● D50 ▶

oval tube with flip top cap



● D30 ▶ with ultra screw on cap



● D35 ▶ with ultra screw on cap



● D40 ▶ with ultra screw on cap



● D50 ▶ ultra oval tube with screw on cap



● D35 ▶ ultra oval tube with screw on cap ( flat applicator)



● D35 ▶ ultra oval tube with screw on cap (pointed applicator)





● D40 ▶  
ultra oval tube with screw on cap ( flat applicator)

OVAL TUBE WITH SPECIAL ACRYLIC SCREW ON CAP



● D30 ▶  
oval tube with special acrylic screw on cap



● D35 ▶  
oval tube with special acrylic screw on cap (D30; D35; D40)



● D40 ▶  
oval tube with special acrylic screw on cap (D30; D35; D40)

## TUBE WITH MASSAGE APPLICATOR





LIP GLOSS TUBE EYE CREAM TUBE

New



TUBE WITH HIGH FLIP CAP

New





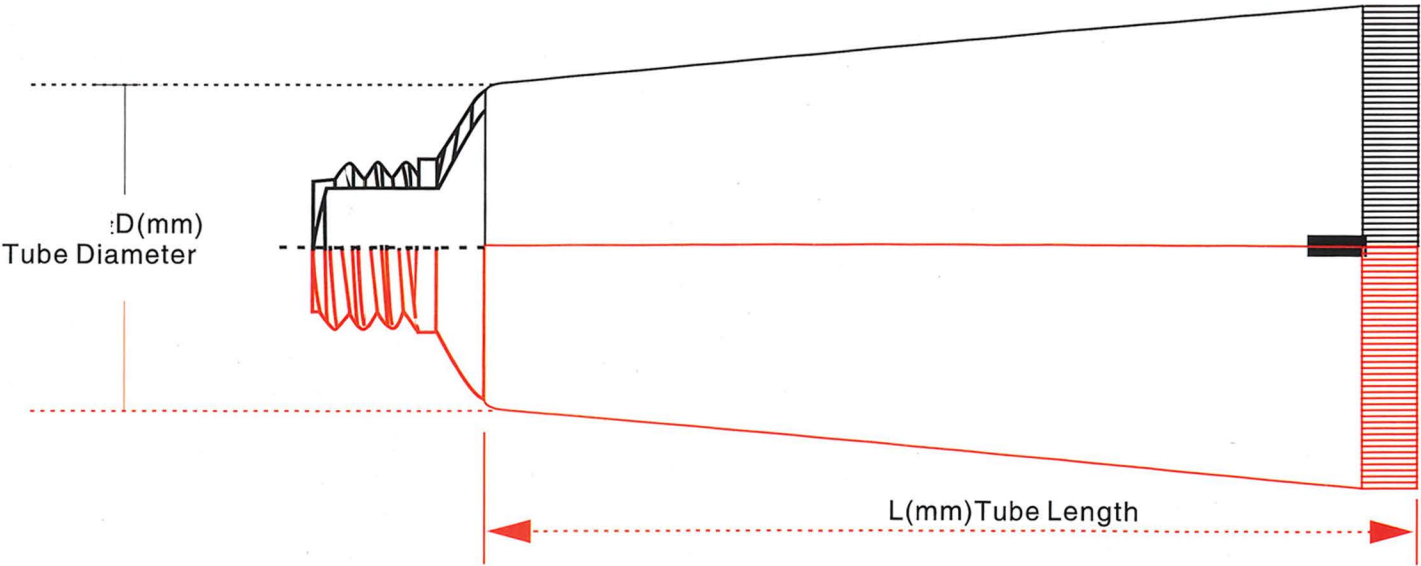
LIP GLOSS TUBE MASCARA TUBE



SPECIFICATIONS AND CAPACITIES

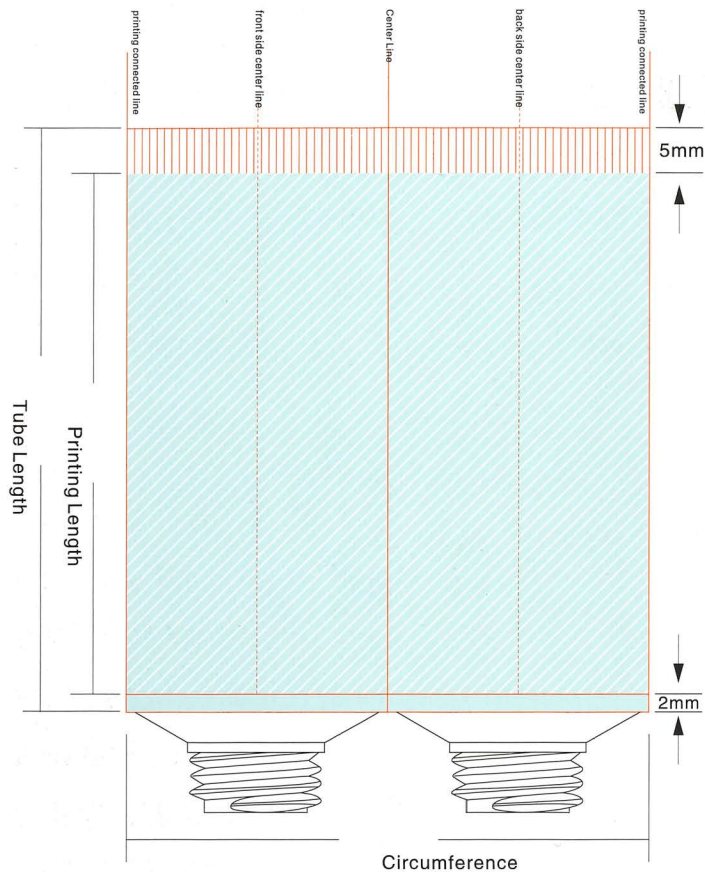
容量 (mm) CAPACITY	直径 (mm) Diameter	Round Tube Series													Oval Tube Series					
		13	16	19	22	25	30	35	38	40	45	50	55	60	25	30	35	40	45	50
3ml		45																		
5ml		61	45	40																
10ml			73	55	48															
15ml			101	75	65	55									59					
20ml				95	81	67									71					
25ml				115	95	78	65								82	68				
30ml					108	89	74								93	77				
35ml					122	100	81								104	84				
40ml						110	88	71							114	91	79			
45ml						120	96	77							124	99	85			
50ml						130	105	82	78							108	90			
60ml							120	95	88	85						123	103	89		
70ml								110	98	93							118	97		
80ml								120	109	103	86						128	107	90	
90ml								130	117	112	94						138	116	98	
100ml								142	127	120	105							124	108	
120ml									147	140	124	101						144	120	105
150ml										166	140	121						170	144	124
180ml											159	138	126	111					163	143
200ml											173	148	140	120					177	171
220ml												160	149	131						189
240ml												170	154	141						
250ml												175	168	146						
300ml													187	165						
350ml														185						
400ml														210						

- 1、Tubediameter is set, length can be adjusted.
- 2、Specifications are for reference only, and customer sizes are available.
- 3、Above tube length are the testing result after the sealing, if customer seals

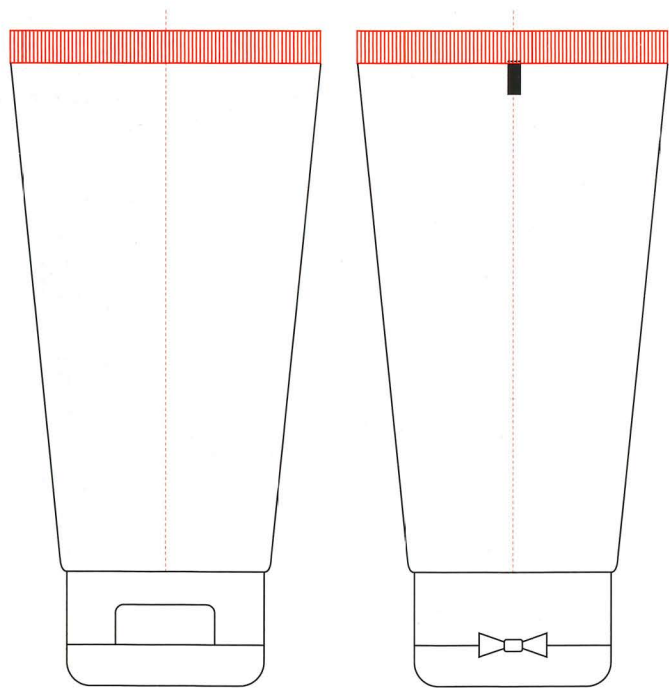




PRINTING AREA ON TUBE



tube diameter	tube Perimeter
13	39.2
16	49
19	58.2
22	67
25	76.6
30	92
35	108
38	117
40	123
45	139
50	155.5
55	169.5
60	184



- 1、Product may shrink by 2.0% following production;
- 2、1.5mm must be reserved for circumference printing;
- 3、Standard size for eye mark is 2.0mm X 5.0 mm, other size are available on request;
- 4、No print area next to the tube shoulder is 2mm, no print area on the tube tail is 5mm, they can be adjusted according to the requirement.